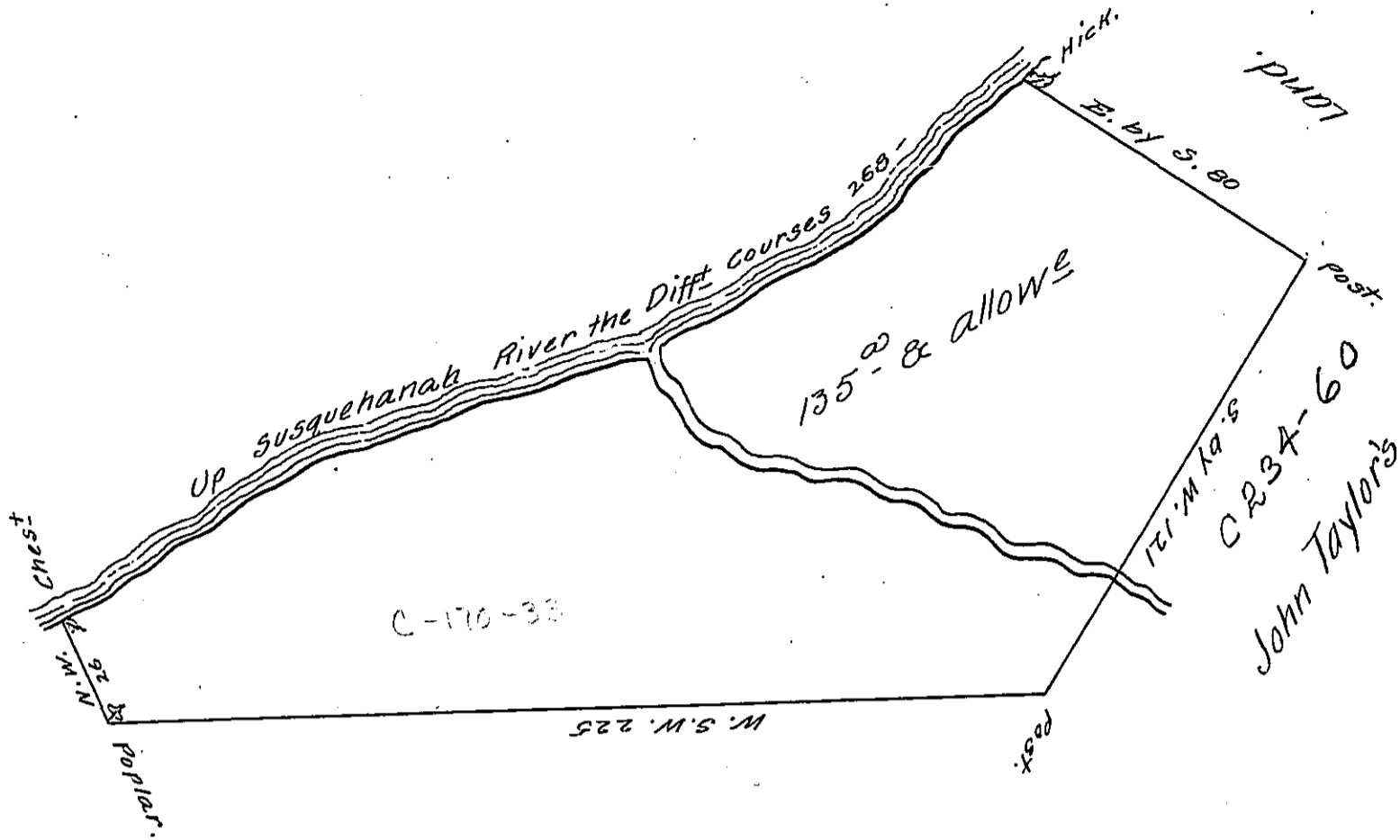


C/05-24



Peters Mountain.

Survey'd on the 13th December 1766 the above discribed tract of Land for Margret Powel in trust for herself & Children - Situate above the Narrows of Paxton-Lancaster County Containing One Hundred thirty five acres & the Usual allowance of six P. Ct By her application of the 23^d day of August 1765. No 608.

P. Bartrem Galbraith D.S.

To Jno Luthens Esq. S.G.

IN TESTIMONY that the above is a copy of the original remaining on file in the Department of Internal Affairs of Pennsylvania, made conformably to an Act of Assembly approved the 16th day of February, 1833, I have hereunto set my Hand and caused the Seal of said Department to be affixed at Harrisburg, this fifth day of May 1906

Grace R. Brown
Secretary of Internal Affairs.